



THE DOUAY MARTYRS SIXTH FORM

Edinburgh Drive, Ickenham, Middlesex, UB10 8QY

Tel: 01895 679406 Fax: 01895 679425

e-mail: douaymartyrs@hillingdongrid.org

www.douaymartyrs.hillingdongrid.sch.uk

**FULFIL
YOUR
POTENTIAL**



The Sixth Form campus offers a wide range of subjects at AS and A2 Level and vocational courses.

The Douay Martyrs School is conveniently situated near the A40 with easy access to bus and underground links.

For more details and an application form please contact Mrs J McGurrell on 01895 679406/438 or email jmcgurrell@hillingdongrid.org



Networking
Academy

THE SIXTH FORM AT THE DOUAY MARTYRS SCHOOL

Introduction

The Sixth Form at The Douay Martyrs School is an all inclusive comprehensive Catholic Sixth Form. We welcome applications not only from students from The Douay Martyrs but also from other schools. The Sixth Form offers a full range of Advanced level (AS and A2) subjects and Advanced Vocational subjects as well as a range of Level 2 subjects. These are described in detail later in the prospectus.

There are over 240 students in the Sixth Form with the vast majority of students following 2 year courses leading to places at University.

Monitoring Progress

The progress of students is carefully monitored. In the Autumn Term there is a Parent's Evening for all students in Year 12 and Year 13. During the course of the year parents will receive one long subject report and two short progress reports identifying pupils attitude to learning and their attainment. Parents are notified at other times if students are having problems in respect of attendance, punctuality, behaviour or academic performance. Each student is set a minimum target grade based on their GCSE results. Students work closely with form tutors who monitor their progress against their target grades.

Tutor Groups and Assemblies

Students are placed in tutor groups. There is a programme of mentoring where the form tutor has regular meetings with each individual student in their form to provide support and advice to each student and to monitor their progress against their target grades. There is also a programme of activities where students are shown how to organise themselves, develop revision skills and examination techniques.

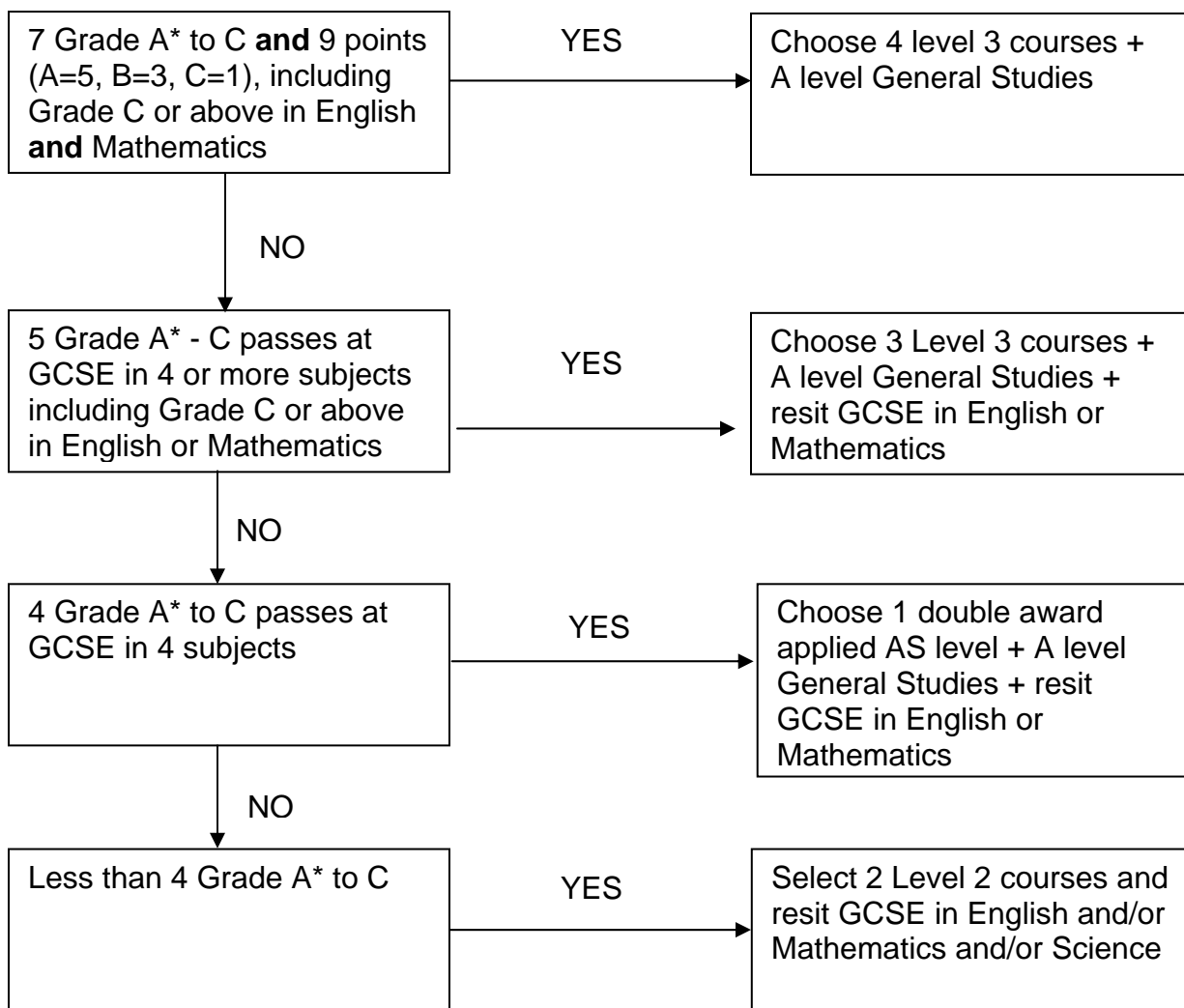
Community Service

All sixth form students are required to undertake some community service within the school. Many students participate in a variety of peer mentoring programmes where they assist younger students, such as the side-by-side reading scheme with Year 7 and Year 8 students and the Peer Mentoring Scheme with Year 11 students. Some students help in lessons whereas other students undertake work outside of school. Students also support staff on duty around the school and we encourage students to take on positions of responsibility and leadership.

Janice McGurrell
Raising Achievement Manager – Key Stage 5

All Year 11 students from The Douay Martyrs school automatically have a place reserved in the Sixth Form if they can demonstrate a consistent positive attitude to learning during Year 11.

Remember – General R.E. and General Studies are compulsory subjects.



Subject Specific Criteria

A-Level Mathematics, Biology, Chemistry and Physics

These courses are appropriate for students who achieve at least a Grade B at GCSE.

A-Level Further Mathematics

This course is appropriate for students who achieve at least a Grade A at GCSE.

AS / A LEVEL COURSES

ART

AS/A LEVEL

Why Study Art?

The world of visual communication is an important part of contemporary society. It encompasses a wide variety of different disciplines which is ever expanding with the development of new technology. It ranges from the traditional aspects of art ie Fine Art, Painting, Sculpture and Architecture into commerce and industry in the form of Graphic, Interior, Product, Textile, Fashion, Engineering and Computer design. More recently Film, Television and Media are at the cutting edge of avant garde Art today. Doing AS/A Level Art is an important step in understanding and being critical of our visual culture which is currently one of the most dominant forms of communication on a global scale.

Course Pre-requisites

Preferably, you will have achieved a Grade B at GCSE level. However, previous study of the subject at GCSE level is not essential, provided you fulfil the Sixth Form entry requirements. Students should have an enthusiasm for Art that relates to their other AS/A Level subjects or in some cases will be channelled towards an artistic education. Students must be prepared to research, visit museums and galleries, be up-to-date with current exhibitions, make independent decisions and be aware of the cultural value of Art and Design.

Course Content

The course is broken down into 6 Units. These include 3 Units in Year 12 for AS Level or continued through to a further 3 modules in Year 13 which will incorporate the final 'A' Levels.

Year 12 AS Level will be

Unit 1	Research project
Unit 2	Personal investigation
Unit 3	Controlled Assignment

Year 13 A Level will be a further extended 3 units including

Unit 1	Specialist project
Unit 2	Personal study
Unit 3	Controlled test

The Research and Specialist Projects are more practically based where students are to use a wide variety of different media and techniques including printmaking, painting, sculpture and textiles. The department has an Apple Mac computer where students are encouraged to extend their work using Photoshop software.

ART (cont)

Enrichment Programme

This includes extra classes after school on Mondays; also, visits to galleries and museums in London. Students are also encouraged to research recent exhibitions independently.

Students are offered the opportunity to partake in the design of theatre sets for the annual school productions as an enrichment activity.

Ms R Alleyne
Head of Art

BIOLOGY

AS / A Level

Why study?

Biology is the study of living organisms and their processes.

The Salters-Nuffield Advanced Biology (SNAB) course draws on contemporary and cutting edge developments in biological sciences that are set in real-life contexts. The SNAB A level Biology course provides students with a valuable insight into life processes, draws upon and develops a number of transferable skills such as communication, logical thinking, research, evaluation, investigational and statistical analysis.

This course provides suitable preparation for the further study of biological sciences at both higher educational and professional establishments. Such courses include: medicine, dentistry, nursing, physiotherapy, sports science, ecology, environmental science, zoology, marine biology, pharmacy, life science, research, teaching and even careers such as architecture, law and accountancy.

Course Pre-requisites

GCSE SCIENCE (double award) Grade A*-B

Course Content

Topic 1	Lifestyle, health and risk
Topic 2	Genes and health
Topic 3	Voice of the genome
Topic 4	Plants and climate change

Assessment

The above topics are assessed by two written papers containing short answer questions designed to test knowledge and understanding. In addition to this there is a practical exam (a seen paper, the written answers are supported by evidence provided by the student's practical portfolio) and a coursework assignment.

Further Information

Details of the course can be found at the following websites:

Edexcel.org.uk (PDF of specification)

Snabonline.com (online support and resources)

All queries can be directed to:

Ms J Horay – Head of Science
Dr T Nandhra

GCE BUSINESS STUDIES

Entry Requirements:

For a two-year programme, students are expected to have achieved a minimum of 5 GCSEs at Grade C or above.

Additional: Preferably grade C or above in Maths and English.

Course Outline:

AS

Unit 1 - Marketing and Accounting and Finance. This section incorporates the study of the market and how a business responds to customer needs. Alongside marketing, students will gain an understanding of the fundamental concepts of business finance and accounts.

Unit 2 - People and Operations Management. Within this section students will gain an insight into the management strategies which a business may employ to fully utilise their human and capital resources. Factors which constrain management will also be considered.

Unit 3 - External Influences and Objectives and Strategy. This section studies the external influences which affect the decision making process of the firm. Within this Module the candidate will draw together an integrative understanding of the business environment.

A2

Unit 4 - Marketing and Accounting and Finance.

Unit 5 - People and Operations Management.

Unit 6 - External influences and Objectives and Strategy.

The above Modules are visited during the second year of the course and the concepts covered in year one, are built upon in further detail. The development of analytical and evaluative skills is the key issue upon which integrated business decisions can be made across a wide range of business units.

Assessment:

Will be by external examinations except for a coursework assignment for Unit 4 in the second year.

Key Skills:

Students will develop further their skills of Communication and Application of Number (level 2/3) during the course. Students will also be encouraged to present and communicate their ideas verbally to small groups and use Information Technology.

Progression:

Advanced Level Business courses provide a sound basis for students wishing to go into Higher Education or into a career in the business environment. Students have gone on into business management, banking, insurance, accountancy, marketing and human resource management.

Further details contact Ms Barker

CHEMISTRY

AS / A Level

Why Study?

Chemistry is about understanding chemicals. Chemists have changed our world and transformed every aspect of our daily lives.

A Chemistry qualification can lead to many career choices in the fields of medicine, veterinary science, pharmaceutical industries, research and project management to mention a few.

By studying Chemistry we aim to challenge, inspire and stimulate our students. They will be encouraged to develop scientific thinking and increase their depth of knowledge of the subject.

Course Requirements

A minimum of B grade in double science, or chemistry in triple science is a pre-requisite of the course.

Course Content

The students follow the Edexcel Modular syllabus which is made up of 6 modules. The course covers practical, investigative and analytical aspects which will allow each students to develop in all areas of scientific thinking.

The modules will include the following areas as well (as practical skills):

Modules 1, 2 and 3 are taught in Year 12 AS

Modules 4, 5 and 6 are taught in Year 13

Module 1	Structure, bonding and main group chemistry
Module 2	Introductory organic chemistry, energetics, kinetics and equilibrium and applications
Module 3	Laboratory chemistry 1
Module 4	Periodicity, quantitative equilibria and functional group chemistry
Module 5	Transition metals, quantitative kinetics and applied organic chemistry
Module 6	Laboratory chemistry 2

CHEMISTRY (cont)

There is no practical exam but all practical applications are assessed by coursework. Every student needs 4 pieces of work each for both AS and A2.

All exams will be sat in June.

Enrichment

Students are encouraged to attend lectures and revision conferences.

Further details

If you require any further information please do not hesitate to contact us.
More information about the course can also be found on the examining board's website: www.edexcel.org.uk

Ms J Horay
Head of Science

DESIGN AND TECHNOLOGY – PRODUCT DESIGN

AS / A2 Level

Course Pre-requisites:

Higher Level pass in GCSE Product Design.

Why study?

What is a product? A product is anything you see around you; buildings, bridges, computers, furniture, games, toys, robots. You can choose an area that interests you and make a product or learn about how things work. It gives you the opportunity to be creative and scientific at the same time!

Product Design opens a lot of doors for you. Have you considered any of these careers?

• Engineering	• Graphic Design
• Electronics	• Landscape Architecture
• Product Design	• Architecture
• Interior Design	• Digital Engineering

Course content

This course is made up of four units spread out over 2 years

At AS Level

Unit 1 – Product Development

Unit 2 – Knowledge and Understanding of Product Design

At A2 Level

Unit 3 – Further Study of Product Design

Unit 4 – Commercial Product Development

Coursework (Units 1& 3)

Skills learned in Key Stage 4 are built upon through more in depth projects. The design process is followed with a variety of different projects;

- Mechanical Toys
- Electronic Sensors
- Remote Control Vehicles
- Interior Design
- Furniture Design

Theory

Areas covered include:

- CAD/CAM
- Environmental issues/energy
- Project Evaluation
- Mechanisms/Electronics
- Material and Process
- Engineering

Design

You will be taught to design products and how to disassemble and evaluate existing products using various drawing systems.

Enrichment

Programme of visits and speakers will support this new course including;

- The Design Museum
- The Science Museum
- The Disneyland Experience
- Guest Speakers from Industry

For further information contact Mr S Roderick

DESIGN AND TECHNOLOGY – TEXTILES

AS / A2 Level

Course pre-requisites:

Higher level pass in Textile Technology.

Why study?

What is a textile product? A textile product is anything you see around made out of fabric. You can choose an area that interests you and design and make a product related to that area. It gives you the opportunity to be creative and technological at the same time.

Textile Technology opens a lot of doors for you. Have you considered any of these careers?

- Textile Design
- Retail management
- Product Design
- Interior Design
- Fashion Design
- Retail Buyer
- Illustrator

Course content

The course is made up of three elements taught in both Year 12 and Year 13.

- Coursework
- Theory
- Design

Coursework 1 Project

Skills learned in KS4 are built upon through more in depth projects. The design process is followed but more independent working is required. Projects include:

- Fashion
- Fabric Design
- Interior Design

Theory

Areas covered include:

- Technology in society market influences
- Environmental issues
- Project evaluation
- Fibre Fabrics
- Materials

For further information contact Mrs H Slavin

ENGINEERING – GCE

Course Structure

The qualification has an AS/A2 structure. It can take the form of:

- a Single Award AS GCE (3 units)
- a Single Award Advanced GCE (6 units)

Progression

The GCE in Engineering qualifies for UCAS points. It gives students a wide choice of progression options into further study, training or relevant employment.

Students who successfully complete the qualification will be well equipped to move onto degrees, BTEC Higher National Diplomas or NVQs.

Course Content

AS UNITS

Unit 1 – Engineering Materials, Processes and Techniques.

Students become familiar with a range of engineering materials and processes and how these can be used to manufacture high quality finished products (externally assessed).

Unit 2 – The Role of the Engineer.

Students investigate the role of a professional engineer responsible for the design or manufacture of an engineered product or service (internally assessed).

Unit 3 – Principles of Design, Planning and Prototyping.

Students produce a design solution to a client brief and demonstrate its effectiveness through developing a prototype (internally assessed).

A2 UNITS

Unit 4 – Applied Engineering Systems.

Students look at ways in which a systems approach can be used to provide engineering solutions. Edexcel will set a brief asking students to complete three practical activities under controlled conditions. Teachers mark the work against the assessment criteria in the specification and Edexcel sample-moderates the work (externally assessed).

Unit 5 – The Engineering Environment

Students learn how regulations and codes of practice affect the design and manufacture of engineering products or services (internally assessed).

Unit 6 – Applied Design, Planning and Prototyping

Students draw upon their newly-gained engineering expertise to design, develop and manufacture an engineering solution to a given client brief (internally assessed).

ENGINEERING – GCE (cont)

The GCE in Engineering helps students to:

- understand the nature and demands of different areas of engineering
- develop an understanding of engineering technologies and the complex sub-groups that make up engineering and related industries
- apply their understanding of engineering and its practical and technological aspects, through project-based study of engineering design, production, commissioning and maintenance.

Students design and manufacture engineering products at both AS and A2 level. They will also examine existing engineered products and investigate the role of the engineer in their design or manufacture.

The A2 external assessment is based on three practical engineering activities.

The GCE in Engineering is a natural progression for students who have completed a GCSE (Double Award) Engineering.

For further information contact Mr S Roderick

ENGLISH LITERATURE

Why study A Level English Literature

English is an exciting subject following on naturally from GCSE English Literature. At AS and A Level you will learn to become a more skilled reader of plays, novels, poems and non-fiction texts. The increased confidence you will acquire with books benefits your wider studies. Of course, English is acknowledged by Higher Education and employers as an influential qualification with many applications.

Course Pre-requisites

GCSE English and English Literature. Enthusiasm, interest and an enjoyment of reading plus a commitment to work hard and meet departmental deadlines.

Course Content

The AS and A Level course on offer enables all students to grow in their appreciation of literature throughout the ages. The emphasis is on breadth and depth of knowledge, preparing students for study at degree level as well as enhancing your enjoyment of literature in general.

The 3 AS Units are:

- The Modern Novel
- Shakespeare Coursework and Poetry
- Drama

The 3 A2 Units are:

- Shakespeare and Poetry
- Prose Coursework
- War Literature

Assessment

AS – Unit 1 The Modern Novel is assessed by a one hour, closed book examination. Unit 3, Poetry and Drama, is assessed by a two hour examination into which students may take the texts they have studied. An essay of approximately 1,500 words on a play by Shakespeare is required for Unit 2 and this is internally assessed.

A2 - Unit 4 Shakespeare and Poetry is a two hour closed book examination while Unit 5 requires a 2,000 – 2,500 word piece of coursework comparing two texts – one of which must be prose. This is assessed internally. Unit 6 is a three hour synoptic unit on unseen texts.

ENGLISH LITERATURE (cont)

Enrichment Programmes

Theatre and museum visits, class debates, access to ICT for extension work, extra study sessions, mentoring and the support of an extensive English section in the Learning Resource Centre.

Comments from Current and Past Students

“I’m really enjoying my English A level and the essay skills help me in other subjects.”

“The two extended pieces of coursework really helped me with my work when I went to University.”

“My favourite Unit was Carol Ann Duffy’s poetry.”

“Studying the Shakespeare play (Much Ado About Nothing) taught me that Shakespeare’s views are still relevant and really improved my research skills.”

Student Destinations

Many of our former students have gone on to study English at University; several have studied English with Media.

- Tara Carroll and Hannah Winter are currently reading English at the University of Leicester.
- Callum O’Reilly is reading English at the University of Leeds.

For further information contact : Ms M Murphy, Head of English

FRENCH

AS/A2 Level

Why Study?

French is a prestigious subject which develops academic ability and practical language skills. It is valuable as a qualification for further language study and as a support for other subjects. Studying French can give a European dimension to a professional career.

Serious commitment is as important as GCSE grades. Preferably, you will have achieved a grade B at GCSE level.

A Level or AS Level French can be the key to an international career, whether as a language specialist or in another professional capacity. Many university courses in different subjects offer the opportunity to spend a term at a European university. The knowledge and skills acquired by language students are highly valued by employers and admission tutors.

Course Content

Course content is based on topics such as transport and travel, food and drink, culture and arts, sports and pastimes, the world of work and the media. Students gain an awareness of current events in France. Coursework and speaking presentations give the opportunity to research a topic of personal interest in-depth. This may be a literary topic or a reflection of other A Level courses.

Assessment consists of 3 modules for AS Level and 6 modules for A2 Level. Two exam papers test integrated skills of listening, reading and writing. There is a speaking test at AS and A2 level and a coursework essay at A2 level only.

Enrichment Programmes

An exchange visit to France is recommended at Easter in Year 12. Visits to the French Institute and French films and plays are organised.

For further information, contact :

Mrs E Honey

Head of Modern Foreign Languages (Acting)

GEOGRAPHY

AS / A2 Level

Why Study?

This course will appeal to those students who:

- Have an interest in and concern for the environment.
- Are interested in current affairs.
- Enjoy studying a subject that is relevant to their own lives and experiences.
- Want the opportunity to carry out practical work outdoors as well as classwork.
- Enjoy travel and finding out about new people, places, landscapes and events.

Geography broadens the gap between 'Sciences' and 'Art' based subjects and therefore combines well with nearly all subjects. Taken with Sciences, Geography support applications for almost any science-based University course like engineering, psychology, environmental sciences and geology; taken with English, Modern Languages, History or Economics. Geography supports an equally wide range of University courses such as Business, Law, Media, Politics and Philosophy.

Because AS and A Level Geography develops the transferable skills and the key skills that employers are looking for, it can lead to a very wide range of employment opportunities. Such transferable skills include collecting, analysing and interpreting data and identifying patterns from maps, statistics and other ICT databases.

Course Pre-requisites

Students should have achieved 5 or more higher level passes at GCSE. It is not a requirement that you should have studied Geography at GCSE in order to take an AS or A Level course in this subject. What is most important is that you should have a lively and enquiring mind, an interest in the environment and current affairs, a willingness to explore new ideas and an ability to communicate your ideas effectively. You should be keen to work conscientiously and be prepared to watch the numerous Natural History TV programmes which are on television and read quality newspapers, which have current articles on many Geographical topics.

Typical careers which Geography students are qualified for, include; Traffic Management, Hazard Planner, Resource Management, Surveyor, Climatologist, Land Use Planner, Civil Service, Oceanographer and many many more.

GEOGRAPHY (cont)

Course Content

Year 12 AS Level

Unit 1 Physical Environments
Tectonics
Hydrology (rivers)
Coasts

Unit 2 Human Environment
Population
Settlements
Migration

Unit 3 Field Investigation (Residential trip for data collection and coursework write-up)

Year 13 A Level

Unit 4 Physical Systems, Processes and Patterns
Weather and Climate
Ecosystems

Unit 5 Human Systems, Processes and Patterns
Industry
Development

Unit 6 Synoptic: People and their Environments
Data response on an Environmental theme which incorporates key skills and an essay on a general geography topic

Enrichment Programme

1. A Level Conferences
2. Residential Field trip
3. Revision Seminars
4. Coursework Support
5. Extensive selection of videos and other resources including a CD-Rom with past papers, mark schemes and revision resources
6. ICT skills development and various software including inter-active questions.

Mr M Pearce
Head of Geography

GOVERNMENT AND POLITICS

AS / A Level

Why Study?

Government & Politics is a useful subject for students interested in studying how politics works in Britain today. It provides an in-depth enquiry into political ideas and the ideologies of the major political parties in Britain, Europe and the world. It also provides a useful complement to the study of other subjects on the curriculum such as History, Economics, Geography, Sociology and Business Studies.

Course Pre-requisites

No previous study is required although students wishing to study this subject will need to fulfil the general entry requirements for AS study at The Douay martyrs School Sixth Form.

Course Content:

A/S

Governing the UK

People and Politics

A2

Political ideologies : Liberalism, Conservatism, Socialism, Environmentalism, Fascism, Anarchism, Nationalism.

Refer to www.edexcel.org for further details.

Enrichment Programmes

Visits to Parliament, visitors from the local council, local MPs, conferences, "What the Papers Say..."

For further information, please contact either Mr Lewis, Miss Fitzpatrick or Mr Graizevsky.

**Mr D Lewis, Director of Training, Research & Development
(Deputy Headteacher)**

HISTORY

AS / A Level

Why Study?

History is a widely respected A Level in a number of professions including Law, Journalism, the media, Teaching and the Civil Service. By the end of this A Level course you should have acquired the ability to use relevant historical knowledge to present a clear and concise argument and to distinguish and assess different interpretations. In short, History teaches you how to think! You will also learn to analyse the key people, ideas and events in the formation of the British party political system, as well as the alternative situations in European countries.

Course Pre-requisites

Grade B at GCSE History is preferred. However, you can start the course without having studied GCSE History if you fulfil the Sixth Form GCSE entry requirements.

Course Content

Currently the course content runs as below:

A/S

Document Study Nazi Germany
British History 1846-1964
Fascist Italy 1919-1945

A2

Themes in History : Britain and Ireland 1798 – 1921
Historical Investigations : Gladstone & Disraeli
Coursework (an extended essay)

Refer to www.ocr.uk for further details

Enrichment Programmes

Visits to A Level conferences in London, video and film archives are used as primary evidence, visiting academics have addressed both Upper and Lower Sixth Formers. There is an educational visit to Parliament.

For further information please speak to Mr K Brady.

Mr K Brady
Head of History

GCE in Applied ICT (Single Award)

Why Study Applied ICT?

The Edexcel GCE in Applied ICT aims to produce effective, discerning ICT users who:

- can select and use appropriate ICT tools and techniques to help them carry out investigations, capture and handle data, solve problems, make decisions, and present and communicate information.
- are aware of the benefits and drawbacks of ICT and its impact on the way in which people live their lives.
- can plan and manage projects and work effectively with others.

Students who successfully complete the qualification will be well equipped to move onto degrees and BTEC Higher National Diplomas in related subjects such as ICT, Computer Science, Information Systems, Multimedia, Software Engineering, Computer Networking, e-Business and Information Management. Those who opt for work-based training are likely to progress to IT User/Practitioner NVQs or vendor-specific qualifications.

Entry Requirements

No previous study is required although students wishing to study this subject will need to fulfil the general entry requirements for The Douay Martyrs School Sixth Form. Students should have an interest in developing the knowledge and skills you need to be a competent and informed ICT user and practitioner.

Course Structure:

There are 6 units, 5 of which are compulsory and the sixth is chosen from 3 optional units. Assessment is by portfolio or a practical assessment.

AS

Unit 1 – The Information Age (portfolio)

Unit 2 – The Digital Economy (portfolio)

Unit 3 – The Knowledge Work (practical assessment)

A2

Unit 7 – Using Database Software (practical assessment)

Unit 8 – Managing ICT Projects (portfolio)

Plus one of:

Unit 10 – Using Multimedia Software (portfolio)

Unit 11 – Using Spreadsheet Software (portfolio)

Unit 12 – Customising Applications (portfolio)

How will I be assessed?

Four of the six units will be assessed by an e-portfolio which is designed to be viewed on screen and two will be externally assessed through practical assessments completed on the computer under examination conditions.

For more information, contact Dr K Obahiagbon, Head of ICT or Miss Kelly

GCE in Applied ICT (Double Award)

Why Study Applied ICT?

The Edexcel GCE in Applied ICT aims to produce effective, discerning ICT users who:

- can select and use appropriate ICT tools and techniques to help them carry out investigations, capture and handle data, solve problems, make decisions, and present and communicate information.
- are aware of the benefits and drawbacks of ICT and its impact on the way in which people live their lives.
- can plan and manage projects and work effectively with others.

Students who successfully complete the qualification will be well equipped to move onto degrees and BTEC Higher National Diplomas in related subjects such as ICT, Computer Science, Information Systems, Multimedia, Software Engineering, Computer Networking, e-Business and Information Management. Those who opt for work-based training are likely to progress to IT User/Practitioner NVQs or vendor-specific qualifications.

Entry Requirements

No previous study is required although students wishing to study this subject will need to fulfil the general entry requirements for The Douay Martyrs School Sixth Form. Students should have an interest in developing the knowledge and skills you need to be a competent and informed ICT user and practitioner.

Course Structure:

There are 6 units, 5 of which are compulsory and the sixth is chosen from 3 optional units. Assessment is by portfolio or a practical assessment.

AS

- Unit 1 – The Information Age (portfolio)
- Unit 2 – The Digital Economy (portfolio)
- Unit 3 – The Knowledge Work (practical assessment)
- Unit 4 – System Design & Installation (portfolio)
- Unit 5 – Web Development (portfolio)
- Unit 6 – Technical Support (portfolio)

A2

- Unit 7 – Using Database Software (practical assessment)
- Unit 8 – Managing ICT Projects (portfolio)
- Unit 9 – Communications & Networks (practical assessment)

Plus three of:

- Unit 10 – Using Multimedia Software (portfolio)
- Unit 11 – Using Spreadsheet Software (portfolio)
- Unit 12 – Customising Applications (portfolio)
- Unit 13 – Web Management (portfolio)
- Unit 14 – Programming (portfolio)

How will I be assessed?

Four of the six units will be assessed by an e-portfolio which is designed to be viewed on screen and two will be externally assessed through practical assessments completed on the computer under examination conditions.

For more information, contact Dr K Obahiagbon, Head of ICT or Miss Kelly

MATHEMATICS

AS / A2 A Level

6 Modules comprise the A Level course. 3 modules are taken at the end of Year 12 (normally C1 and C2, M1 or S1 – AS modules) and a further 3 at the end of Year 13 (normally C3, C4 and a third module taken from either M1, S1, M2 or S2). The pure modules are made up of:

1. Algebra)
2. Geometry) C1,C2, C3, C4
3. Trigonometry)
4. Calculus)

The mechanics modules are made up of:

1. Stationary particles (Statics)) M1 and M2
2. Moving particles (Kinetics))

The statistics modules are made up of:

1. Measures of central tendency (mean, median and mode)
2. Measures of Dispersion (variance and standard deviation)
3. Distribution (binomial, poisson and normal)
4. Lines of Regression

The exams can be taken on two occasions throughout the year:

1. January
2. June

Each module can be re-taken up to twice a year.

Each paper lasts 90 minutes and comprises approximately 8 questions with a total value of 75 marks per exam paper:

Grade boundaries:

1. A Grade 60+ marks out of 75
2. B Grade 52.5+ marks out of 75
3. C Grade 45+ marks out of 75
4. D Grade 37.5+ marks out of 75
5. E Grade 30+ marks out of 75

MATHEMATICS (cont)

The marks from modules C1, C2 and the application module (S1 or M1) are added together to give a mark out of 225 for AS.

80%+ out of 225 = 180	A Grade for AS
70%+ out of 225 = 157.5	B Grade for AS
60%+ out of 225 = 135	C Grade for AS
50%+ out of 225 = 112.5	D Grade for AS
40%+ out of 225 = 90	E Grade for AS

The marks from modules C1, C2, C3, C4, S1 or M1, and M2 or S2 (6 modules) are added together to give a mark out of 450 for A Level. The same percentages apply to both A Level and AS namely:

80%+ out of 450 = 360	A Grade for A Level
70%+ out of 450 = 315	B Grade for A Level
60%+ out of 450 = 270	C Grade for A Level
50%+ out of 450 = 225	D Grade for A Level
40%+ out of 450 = 180	E Grade for A Level

Mathematics is a most interesting subject in its own right teaching students to think logically.

Mathematics services other subjects such as:

Physics
Chemistry
Business Studies
Economics, etc.

It is necessary for pupils to achieve a B grade to qualify for A level Maths.

For more information contact Ms D Heck

FURTHER MATHEMATICS

A Level Further Mathematics consists of 11 modules, seven of which are Pure Maths and four are application modules

Students complete the normal A2 qualification in Year 12, by taking the same modules as for A2 level Mathematics. In Year 13, students undertake Further Pure Modules FP1, FP2, FP3 as well as Mechanics 2 (M2) and Decision 1 (D1). The FP modules deal with concepts such as Imaginary numbers, Maclaurin and Taylor series, and Matrix Algebra which will stand them in good stead for studying Mathematics at University. Mechanics 2 takes the modules covered in M1, such as Statics of rigid bodies and Kinematics, in greater depth. Decision 1 introduces students to the ideas of Networks and Linear programming.

It is possible to achieve an AS grade in Further Mathematics. For this, students must have completed A2 Mathematics, and then the extra units of FP1, M2 and D1.

Students must have achieved an A or A* grade at GCSE. Pupils are able to re-sit modules twice a year if required

MEDIA STUDIES

A Level

Why Study?

Media Studies is an increasingly popular subject at A Level. It explores a variety of media forms and aims to develop a working knowledge of media texts, audiences, institutions and debates. The media is a rapidly growing industry which offers a wide range of job opportunities. A working knowledge of key elements of the industry can be beneficial in many of the available jobs.

Course Content

The scope of topics is broad, allowing for investigation of film genres and history, television and radio production and genres, advertising and print media.

Media Studies encourages the development of critical and analytical skills as well as promoting an awareness of important current media issues.

Assessment is through practical productions in a number of media forms and examinations based on media theory studied in class and original research.

For further information contact Miss C Cross

GCE IN MUSIC

Who should you study Applied Music?

Anyone who has a keen interest in creating and listening to different styles of music and who wishes to broaden their experience and deepen their understanding of both live and recorded music. According to which Areas of Study and options you choose, you could follow a route which focuses mainly on classical music or popular music.

The course demands performing, composing, listening and analytical skills in almost equal measure. You will improve your skills in performing and composing in a range of styles. You will listen to a wide variety of music and develop a more informed appreciation of how and why it was written and/or performed.

Entry Requirements

It is useful to have taken music at GCSE level, but this is not essential as long as you can already play an instrument and are able to read music.

Course Structure and Assessment

AS

Unit 1 – Performing. This will be assessed through a recording of your solo performance and by giving you a mark for your contribution to group performances during the course.

Unit 2 – Developing Musical Ideas. You will also study the following topics and submit two compositional techniques exercises: Textures (Baroque counterpoint or Minimalism); Chords and Cadences (Bach chorale or 32 bar pop song); Scales, Modes and Series (Renaissance counterpoint or Serialism); and Timbres (extended instrumental techniques or electro-acoustic music).

Unit 3 – Listening and Understanding. This unit is in two parts. In Part 1 you will answer questions related to music heard on a CD during a 45-minute examination. The music heard will be in a range of styles. In Part 2 you will have an hour and a half to respond to two structured questions based on your chosen Areas of Study.

A2

Unit 4 – Specialist Options. You will be assessed by either a composition portfolio or perform a recital.

Unit 5 – Performing and Composing. You will be assessed by completion of a commissioned exercise.

Unit 6 – Analysing Music. You will take a listening test and will also be asked to answer written questions on the music you have studied.

What can I do at the end of this course?

This A level can lead to further study in music or performing arts in higher education at degree or HND level and may lead on to a career in the music industry.

For more information, contact Ms K Posner, Head of Music

PERFORMING ARTS

AS and A2 Performing Arts. (OCR):

The Course:

Students take three units in this course. It is an exciting, practical and vocational style course which will stand students in good stead for higher education opportunities in Drama Schools and Colleges. There is no written exam. The written coursework requires students to explore the organisations that provide the public with performing arts products like films and plays and also the jobs within those organisations. The practical coursework asks students to target performances skills that they want to develop in Drama, Dance or Music and to prepare their own performances demonstrating these skills. Finally, there is a performance before an Examiner which offers students the opportunity to develop their skills to their highest level. This course requires one extra hour a week after school, usually on drama practical work.

There are regular theatre visits and students are encouraged to go on their own to see productions.

Why Study?

AS and A2 Drama and Theatre Studies will build skills in performance and dramatists. Further studies: studying at Drama Schools such as the Central School of Speech and Drama or students could opt to study Drama as part of a combined course. Popular combinations are Media, Film or English Literature.

Entry Requirements:

It is recommended that students have GCSE passes in Drama, English Language and Literature, grade A-C in order to do AS / A2 Level as the practical work, text work and subsequent written exams are quite demanding in these areas.

Enrichment:

Students will have opportunities to take part in school productions and smaller workshop performances.

Facilities:

The Drama department is currently improving its facilities, acquiring better audio-visual ICT and lighting equipment, to enhance performance opportunities

**For more information contact Ms E Irvine, Head of Department
Mr A Colagrossi**

PHYSICAL EDUCATION

AS AND A2 LEVEL

Why Study?

The course provides a sound foundation for study in higher education. Students must have a desire to study the scientific, socio-cultural and environmental factors which influence physical education and sport.

Course Pre-requisites

Students do not have to have taken PE at GCSE Level but must fulfil the Sixth Form entry requirement.

Course Content

3 topics in each year.

Year 1 topics:

Unit 1 Module 2562	Factors affecting Performance Applied Anatomy and Physiology Acquisition of Skill
Unit 2 Module 2563	Contemporary Studies in PE and Sport
Unit 3 Module 2564	Coursework – Practical and Written

Year 2 topics:

Unit 4 Module 2565 i.	Psychology of Sport Performance
ii.	Historical Studies in PE and Sport
Unit 5 Module 2566	Exercise Physiology + synoptic question
Unit 6 Module 2567	Coursework – Practical and Theory

Assessment Method

Written papers:

AS Unit 1- 2562	1 hour 30 minutes – June Exam
AS Unit 2- 2563	1 hour 15 minutes – January Exam
A2 Unit 4 - 2565	1 hour 15 minutes - June Exam
A2 Unit 5 - 2566	1 hour 30 minutes – June Exam

Coursework:

Two activities – an individual and a game, each assess for:

AS Unit 3 2564	–	Demonstration of specific techniques Observation and analysis of techniques – written coursework
AS Unit 6	–	Effective performance Understanding performance –oral assessment

Enrichment Programme

Revision Day course

Any relevant exhibitions at Science Museum etc.

PHYSICAL EDUCATION (cont)

Career and Higher Education Prospects/Opportunities

The course is an essential qualification for specialist study in Physical Education and Sports Studies in higher education and is a suitable qualification for other areas of study.

The course provides an excellent foundation for students intending to pursue careers in teaching and coaching, the leisure industry, recreational management, physiotherapy, the health and fitness industry and professional sport.

For more information contact Mrs J McGrath

PHYSICS

AS / A Level

Why Study?

Studying Physics you will understand how the world around you operates and how laws govern our entire universe.

Along the way you will be able to gain answers to questions such as:

How does a car engine work?

How is electricity generated?

Why shouldn't I put a metal spoon in the microwave?

What is a nanobot?

And many, many more questions about things that have intrigued you since early childhood.

But where can I go and what can I do with a PHYSICS qualification?

Again, a very simple answer... almost anywhere, doing almost anything. PHYSICS can open the door to any technological or engineering based career including:

Information and communications technology.

Robotics.

Medical technology.

Nanotechnology.

Civil, mechanical, production, and environmental engineering.

Even rocket science.

What do I need to study PHYSICS?

You will need a minimum of a B grade in Double Science, or PHYSICS in Triple Science to study A Level PHYSICS.

So what exactly will I be learning in A Level PHYSICS?

A Level PHYSICS is a modular course consisting of six separately assessed units. You will study three in Year 12 and three in Year 13, all six together will give you the A Level PHYSICS qualification.

You will cover theoretical, analytical, investigative, and practical aspects to help you develop a deep understanding of everything around you.

The modules you will study are listed below:

- 1) Mechanics and radioactivity.
- 2) Electricity and thermal PHYSICS.
- 3) Special topics research and investigations.
- 4) Waves and our universe.
- 5) Fields and forces and investigations.
- 6) Synoptic (overall).

For further details contact: Ms J Horay, Head of Science, Dr C Bentley

PSYCHOLOGY

Why Study the Subject?

Psychology is a very intriguing subject which is based on the study of mind and behaviour. In other words, what we do and why we do it are the two main questions that Psychologists try to answer.

Psychology is a very popular subject studied only at Key Stage 5 or A level. We currently have 85 pupils studying the subject – 60 at AS level and 25 at A2 level.

Our aim is not only to help students to achieve the highest grade possible but also to develop their analytical skills, apply their knowledge and help in the real world to have a better understanding of human nature.

The student will learn in an atmosphere which helps them to become independent learners to be able to participate in discussion and debate as well as get a better understanding through conducting experiments and reading around the subject.

Course Requirements

Previous study of the subject at GCSE is not essential provided that students have a minimum of 5 or more A* to C's including English Language.

Students should also enjoy reading as it is expected that every student should read around the subject at least 2/3 hours a week.

Course Content

We study the AQA – A syllabus. In Year 12 'AS' Level, we will cover 6 topics which include, stress, abnormality, memory, attachments, research methods and social influence.

In Year 13 'A2' level, we will cover topics such as perception, pro and anti-social behaviour and personality development, individual differences e.g. schizophrenia and depression. We will also cover issues such as gender and culture bias, use of non human animals and ethical issues.

Assessment Method

AS level - 50 % of total A level. Three exams of 1 hour each. One to be sat in January and the other two to be sat in May.

A2 level – 50% of total A level. Two exams, one is an 'Options' paper sat in January and one is a 'Synoptic' paper sat in June.

One 'centre assessed' piece of coursework which involves writing a 2000 word investigative report on a piece of research that the student has carried out.

Careers in Psychology

Studying Psychology at degree level will enable the student to gain a career in the following:

Teacher, Criminologist, Psychotherapist, Counsellor, Educational Psychologist, Child Psychologist, Psychiatrist, Private Detective, Police etc.

Present Students Comments about the Subject

“It is a very interesting subject and gives you a better view on social issues” (Monica, Year 12).

“A good subject to take as it gives you a lot of new and interesting knowledge and also links to many careers such as teaching, law, business etc.” (Arina, Year 12).

“I really enjoy Psychology because it is interesting and we have great teachers” (Robert, Year 12).

“I find Psychology extremely interesting with many different concepts and theories that I enjoy applying to the world around me. I am interested in taking Psychology at degree level as I believe it could benefit greatly in my future career” (Anthony, Year 13).

“Psychology is a mentally challenging subject that requires high amounts of concentration and determination” (John, Year 13).

“I find Psychology fascinating and will definitely take it at degree level” (Sasha, Year 13).

For further information contact Mrs C Kalsi

RELIGIOUS STUDIES

Why Study?

If you are interested in asking important questions relating to the nature and measuring of existence then Religious Studies is for you!

Consider the following:

- Does God exist?
- Why does God allow people to suffer?
- Is abortion always wrong?
- What is evil?
- Should we always tell the truth?
- Should we believe in miracles?
- Are people who claim to see visions deluded?

If you think these are questions that need answering, does religion always have the answers that will satisfy you?

Course Pre-requisites

A lively and enquiring mind to key concepts and ideas.

The ability to discuss in a group your own opinions and justify them to others who may disagree.

The ability to disagree without becoming disagreeable!

A general knowledge of religious ideas and concepts.

Preferably, you will have achieved a grade B at GCSE level. However, previous study of the subject at GCSE level is not essential, provided you fulfil the Sixth Form entry requirements.

Course Content:

Areas of study include:

The Philosophy of Religion including:

- Proving God's existence
- The problem of evil
- Religious Experience and language

Ethical Theory and Practical Ethics including:

- The nature of ethical theory and language
- Moral issues e.g. abortion, euthanasia, suicide, war, capital punishment

Enrichment Programme

The opportunity to meet other Sixth Form students and engage in meaningful discussion.

Conference and Examination Support.

RELIGIOUS STUDIES (cont)

Staff

AS

Philosophy of Religion
Ethical Theory
Foundation Module

Mr P Kassapian
Mrs J McGurrell
Mr M del Rio

A2

Philosophy of Religion
Ethical Theory
Connection Module

Mr P Kassapian
Mrs J McGurrell
Mr M del Rio

Assessment

To achieve the AS in Religious Studies, students take the Philosophy examination in January and the Ethics paper and Foundation module in June.

To achieve the A2, students complete a coursework assignment for Ethical Theory for January and will take the Philosophy and Connections examinations in June.

The examinations consist of answering 2 essay questions for each module.

For more information contact Mrs C Gorman, Head of RE Department

APPLIED SCIENCE

Why study Applied Science?

Applied science is an A level course that allows a student the opportunity to continue their studies in each of the three sciences in one combined course. The course is taken as either a single or double award giving a student 1 or 2 A levels depending on the number of units they choose.

Entry requirements to the course.

This course is no easier than other science A levels and should be taken by students who enjoy all three of the sciences and are also proficient in mathematics. Therefore, a grade of at least a C is required at GCSE double science or three Cs in the individual sciences if you have taken triple science.

Course Information

Applied science has been designed to provide a broad education as a foundation both for training leading to employment and for further and higher education. This is achieved by ensuring that students develop the general skills, knowledge and understanding that underpin a range of occupations or professions.

The course is made up of some compulsory units and others that students are able to choose in consultation with their teachers. Testing of the students work is carried out in two ways, either through examination or through internally assessed portfolios of student work.

Some of the units that are available to study are listed below:

- Investigating science at work
- Monitoring the activity of the human body
- Controlling chemical processes
- Controlling the transfer of energy
- Food science and technology
- The biochemistry of healthcare
- The actions and development of medicines
- Sports science
- Science in communication

Further Information

If you would like further information on this course please visit www.aqa.org
Or speak to,

**For more information contact Ms J Horay, Head of Science
Dr T Nandhra**

SOCIOLOGY

Why Study Sociology?

Having an understanding of sociological ideas is essential to the educated person in the modern world. Sociology is the study of society and covers topics such as 'Power and Politics', 'Crime and Deviance', 'Family', 'Education', and 'Religion'. These are all constantly debated in the media and in everyday life.

Most universities offer degrees in Sociology or Sociology combined with English, History, Politics, Economics, etc. Sociology is also likely to form part of other degrees such as Law and Industrial Relations. Many of our students go on to study Sociology combined with Psychology. Others find it helpful in careers such as teaching, nursing, social work, the police, law, local government and medicine amongst others.

Course Pre-requisites

A minimum of Grade C in GCSE English.

It is not necessary to have studied Sociology previously.

Course Content

Theory and Methods form the basis of all study. Currently the subject areas below make up the basis of the AS and A2.

AS Family
 Education
 Theory and Methods

A2 Religion
 Theory and methods
 Crime and Deviance

Both AS and A2 Sociology are assessed by examinations which take place in January and then in June.

Enrichment Programmes

Sociology courses are available in London with leading sociologists as speakers. This year, we will be visiting conferences with speakers including ex-prisoners who will be speaking about crime and deviance. We have visited Neasden Temple and there should be an opportunity to visit Uxbridge Magistrates Court.

For further information contact: Mr K Marshall or Ms M Mistry

SPANISH

AS/A2 LEVEL

Why Study?

Spanish is a prestigious subject which develops academic ability and practical language skills. It is valuable as a qualification for further language study and as a support for other subjects. Studying Spanish can give a European dimension to a professional career.

A Level or AS Level Spanish can be the key to an international career, whether as a language specialist or in another professional capacity. Many university courses in different subjects offer the opportunity to spend a term at a European university. The knowledge and skills acquired by language students are highly valued by employers and admissions tutors.

Course Pre-requisites

Serious commitment is as important as GCSE grades. Preferably, you will have achieved a grade B at GCSE level.

Course Content

Course content is based on topics such as transport and travel, food and drink, culture and arts, sports and pastimes, the world of work and the media. Students gain an awareness of current events in Spain. Coursework and speaking presentations give the opportunity to research a topic of personal interest in-depth. This may be a literary topic or a reflection of other A Level courses.

Assessment consists of 3 modules for AS Level and 6 modules for A2 Level. Two exam papers test integrated skills, of listening, reading and writing. There is a speaking test at AS and A2 level and a coursework essay at A2 level only.

Enrichment Programmes

An exchange visit to Spain is recommended at Easter in Year 12. Visits to the Spanish Institute and Spanish films and plays are organised.

**For further information contact: Mrs E Honey
Head of Modern Foreign Languages Department (Acting)**

VOCATIONAL A LEVEL COURSES

GCE IN APPLIED BUSINESS

You can study for:

- A Single Award AS GCE (3units)
- A Double Award AS GCE (6 units).
- A Single Award Advanced GCE (6 units)
- A Double Award Advanced GCE (12 units)

What will I learn about on this course?

The AS units focus on investigation. You will learn about:

- Investigating People at Work - Investigating Business - Investigating Marketing - Investigating Electronic Business - Investigating Customer Service - Investigating Promotion - Investigating Enterprise

The A2 units focus on decision making and the impact of decisions on business. You will learn about:

- Business Development - Managing and Developing People - Marketing Decisions - Impact of Finance on Business Decisions - International Dimensions of Business - Organising an Event - Influences on Business

How will I be assessed?

You will have an examination in some units. For the other units you will be assessed by coursework.

What could I go on to do at the end of my course?

The GCE in Applied Business qualifies for UCAS points so if you complete it successfully you could move on to study for a degree or BTEC Higher National Diploma. You could also go on to a Modern Apprenticeship in related subjects such as Administration or Management or on to relevant employment.

What do I need to know or be able to do before taking this course?

You would benefit most from a GCE in Applied Business if you have one or more of the following:

- a profile of GCSEs at grade A*-C which might include GCSE in Business at grade A* - C
- other level 2 qualifications such as GCSE (Double Award) in Applied Business at grades AA-CC; Intermediate GNVQ in Business; an Edexcel BTEC First Certificate or Diploma in Business. You should also have an interest in exploring the world of business in a highly practical way.

What kind of student is this course suitable for?

You will enjoy this course if you would like to:

- develop an understanding of how business works in the real world
- discover the problems and opportunities faced by local, national and international businesses
- have an opportunity to organise an enterprise activity
- learn about how business functions such as marketing, finance, human and physical resources work together as part of a whole business

GCE IN APPLIED BUSINESS (cont)

- take part in practical activities such as planning and running a business, organising an event or planning and setting up a website.

Is the qualification structured like other GCEs?

Yes, the qualification has an AS/A2 structure.

AS is short for Advanced Subsidiary. This is the first half of the Advanced GCE course. It is a stepping stone to the full Advanced GCE qualification. You can take the AS on its own, if you and your teacher agree that this is best for you. You can also decide at the end of the AS course to continue with the course and take the A2 units for the full Advanced GCE qualification.

Further details contact Ms Barker

HEALTH AND SOCIAL CARE

Why Study?

The aim of the course is to enable learners to experience vocationally related learning and therefore enabling learners to make an informed decision with regard to career routes open to them on completion of the course. The course aims to equip learners with knowledge and understanding and develop skills including those of research, evaluation and problem solving in the sectors of:

- Health
- Early Years (care and education)
- Care of Older people
- Individuals with specific needs

A GCE in Health and Social Care could lead onto further study such as a degree in a related subject, or to relevant employment within the health and social care services.

Course Pre-requisites

No previous study is required although students wishing to study this subject will need to fulfil the general entry requirements for The Douay Martyrs School Sixth Form.

Course Content

The course offered is the double award which is the equivalent of 2 A levels. 6 units will be completed in both Year 12 and Year 13.

AS

- Unit 1 – Human Growth and Development
- Unit 2 – Communication and Values
- Unit 3 – Positive Care Environments
- Unit 4 – Social Aspects and Lifestyle Choices
- Unit 5 – Activities for Health and Well-being
- Unit 6 – Public Health

Units 1 & 4 will be assessed externally by examination, lasting 1½ hours. All other units will be assessed by coursework.

A2

- Unit 7 – Meeting Individual Needs
- Unit 8 – Promoting Health and Wellbeing
- Unit 9 – Investigating Disease
- Unit 10 – Using and Understanding Research
- Unit 11 – Social Issues and Welfare Needs
- Unit 12 – Understanding Human Behaviour

Units 7 & 12 will be assessed externally by examination, lasting 1½ hours. All other units will be assessed by coursework.

Enrichment Programmes

A work placement will also be attached to this course and it is expected that this placement will reflect individual's areas of interest.

OCR IT PRACTITIONER (CCNA)

The OCR Level 3 Certificate for IT Practitioners (ICT Systems Support) has been designed to provide accreditation for the full breadth of essential knowledge, understanding and skills that would be needed by a competent employee engaged in the process of supporting ICT systems. The qualification has been designed to develop knowledge, understanding and skills in the full range of functions involved in system support including service delivery, planning and control, the installation of networks and operating systems, the installation and maintenance of applications, the testing of systems and the production of customer support materials. The qualification provides opportunities for learners to study towards system and network management in addition to being able to take units that are vendor specific.

AIM

This qualification aims to:

- develop understanding of the ICT industry and its environment.
- develop understanding of the process of system support from the point of investigation of customer requirements through to the testing of the completed product.
- develop the skills needed to manage an ICT system and network.
- develop practical skills in installation, maintenance and testing of ICT systems.

TARGET GROUP

The qualification is aimed at those who already possess basic knowledge and understanding of ICT system and who wish to extend their knowledge and skills. It is suitable for those who are already employed in system support roles in the IT industry and who wish to develop further knowledge and skills to support and/or extend their work activities. The qualification will also meet the needs of those who are studying in preparation for roles that will involve system support activities.

Although candidates may find it helpful to draw on previous experience and learning in the area of IT User skills and/or OCR Level 2 Certificate for IT Practitioners (ICT Systems Support), this previous learning is not a pre-requisite.

UNIT BREAKDOWN

Candidates who are successful in achieving 3 mandatory Units and three optional Units will be awarded an OCR Level 3 Certificate for IT Practitioners.

CORE UNITS

UNITS AND DESCRIPTIONS		
Unit 1	Service Delivery, Planning and Control	Mandatory
Unit 2	Hardware/Equipment & Systems Installation	Mandatory
Unit 3	Customer Support Provision	Mandatory

OPTION

CCNA	
Unit 15	Network Fundamentals
Unit 16	Routers & Routing Basics
Unit 17	Switching
Unit 26	WAN Technology

For a full award a candidate must achieve six Units as follows:

- Unit 1** Service Delivery, Planning and Control
- Unit 2** Hardware/Equipment & Systems Installation
- Unit 3** Customer Support Provision

Three Units from the remaining Units (Units 15, 16, 17 & 26). We will aim for our students to complete the four Cisco modules in order for them to achieve the standard required for the final professional CCNA accreditation exam.

2.2 ASSESSMENT PATTERN

Units 1 and 2 are locally assessed by the centre and externally moderated by OCR. Assessment activities will take the form of practical activities that are locally devised. Unit 3 is externally assessed by OCR. The assessment will take the form of an externally set and marked on demand assignment. CISCO have their own external assessments conducted through the Cisco Networking Academy programme.

Please note: This course does carry UCAS points for those wishing to go on to University. The UCAS points are as follows: 80 points for the Certificate and 100 points for the Diploma.

CISCO Networking Academy Programme

The Internet is Changing the Way We ... Live, Work, Play and Learn

This is an exciting time! The world is changing. Technology is revolutionising almost every aspect of our lives and behind the technology revolution you'll find networks connecting people, places, and ideas. Connecting the networks are people like you who have training in technology. You do not have to just use the network, you can build the network.

Become Part of the Solution

Every network has a team of people who plan, build, maintain and expand it. Whether you are interested in managing switches and routers, cabling and physical plant, system design and setup, security, programming or troubleshooting computers, the Cisco Networking Academy Programme can help you.

Businesses, governments and educational institutions are looking to hire IT professionals who have mastery of these skills.

Academy courses prepare you for a variety of industry recognised certifications that are proof to potential employers of your mastery.

The Cisco Networking Academy Programme

- The Cisco Networking Academy Programme uses a blended learning model. Each Academy integrates high quality face-to-face teaching with hands-on lab exercises. Cisco provides multi-media delivery of challenging curricula and embedded assessment over the Internet.
- The Academy Programme successfully prepares graduates for networking and IT related jobs in the public and private sectors, as well as for higher education in engineering, computer science and related fields.

Benefits of the Academy Programme

Students in the Academy programme learn from curriculum delivered through the Global Learning Network.

- Unlike a text book, the curriculum is updated regularly with the latest technology and improvements.
- Students with different learning styles have access to several modes of explanation.
- Students receive feedback through comprehensive assessments where they apply their skills. They discover what they have learned and what they need to review.

The Academy Programme also has a significant hands-on component where students apply what they learn.

- They build and troubleshoot real networks led by Cisco Trained Instructors.
- Lab practice encourages teamwork and enhances problem solving abilities.

Students graduate from the programme with a marketable skill that has been tested and evaluated prior to their first day on the job.

- CertCities ranked the Cisco Academy Networking Programme best overall certification programme in August 2002.

High Quality Curriculum

This current course list shows the breadth of the Academy curriculum available. Courses cover a wide range of networking and IT skills. Each of these semester length courses prepare students for practical IT careers and education:

- They are founded on sound pedagogy and proven educational practices.
- Courses prepare students for industry certification: CAN, CCNP, CompTIA's A+ certification, Sun Certified Programmer for JavaTN 2 Platform.
- The curricula offer several career paths: network specialists, computing hardware and software specialists, programmers, advanced degrees and others.
- Students also develop 21st Century skills. They improve maths, science, writing and problem-solving skills and work productively with others.

Career Preparation for Many Paths

The Cisco Networking Academy Programme provides you with a solid foundation for many different careers in the Internet economy. These are some of the career paths in the IT sector.

- Technical Support Professionals
- Network Design and Administration
- Programming and Software Engineering
- Database Development and Administration

Career Connection for Students

There are other technology training programmes but only the Cisco Networking Academy Programme offers access to the Career Connection. This worldwide, online resource for students and graduates connects you to opportunities through job placement, internships and career development services.

- Public and private organisations work with their Local Academies to provide job experience opportunities for students and graduates.
- Career Connect programmes provide real-world experience during the programme in connection with your Academy site.
- Alumni use the Career Connection to keep knowledge and skills updated.

Who is a Typical Academy Student?

Anyone, anywhere excited about a career in IT.

Are you?

Apply Today!

More information about the Academy programme: <http://cisco.netacad.net/>

LEVEL 2 COURSES

APPLIED GCSE IN BUSINESS

What is a GCSE in Applied Business?

A GCSE in Applied Business is a nationally recognised work-related qualification designed to provide you with a choice of routes into further education or employment. It is made up of three units.

What is a Double Award?

A double award is a qualification equal to two GCSE's - it is twice the size of most GCSE's.

What do I need to know or be able to do before taking the GCSE in Applied Business?

You do not need to have studied Business before starting the GCSE. It is important that you have a lively and enquiring mind, an interest in business, a willingness to explore new ideas and an ability to communicate your ideas effectively.

Why should I choose this course?

You will:

gain an understanding of business, investigate the part people play in business, have an opportunity to apply learning in a practical and realistic way, follow a programme of study that enables progression to further courses and employment in business, develop Key Skills which are highly valued by employers and further education and gain confidence by developing independent learning skills.

Who is the GCSE in Applied Business for?

This course will appeal to you if you:

have a keen interest in business and how it operates, enjoy studying a subject that is relevant to your life and experiences, want to find out more about business through personal investigation, are interested in developing an understanding of how businesses work, develop and make a profit, want to study a course that is active and enjoyable, want to move on to a related career or further education, wish to build up a qualification by studying individual units.

The structure of the GCSE in Applied Business

Unit 1: Investigating Business

Unit 2: People and Business

Unit 3: Business Finance

How is it graded?

The GCSE in Applied Business is a double award so is awarded two grades. The grades will be the summary of your results for each of the three grades for each unit. These will be reported as A*A* through to GG depending on how well you have done in each of your three units

GCSE HEALTH AND SOCIAL CARE (DOUBLE AWARD)

Why Study?

A GCSE in Health and Social Care will give you access to a range of career and further education opportunities in the care services such as nursing, social worker, care assistant and working with children. You will use a variety of skills throughout the course, including collecting, interpreting data, communicating your findings in different ways, and identifying and developing the links between different parts of the subject. These skills are in great demand and are recognised and highly valued by employers and colleges.

Course Pre-requisites

No previous study is required though it is important to have an interest in health and social care, a willingness to explore new ideas and an ability to communicate your ideas effectively.

Course Content

Unit 1 – Health, Social Care and Early years provision.

- Topic 1 – Care needs of major client groups
- Topic 2 – Types of care service
- Topic 3 – Ways of obtaining care services and barriers to access
- Topic 4 – Main jobs in health, social care and early years provision
- Topic 5 – The value bases of care work

Unit 2 – Promoting Health and Well-being

- Topic 1 – Understanding health and well being
- Topic 2 – Factors positively influencing health and well being
- Topic 3 – Risks to health and well being
- Topic 4 – Indicators of physical health
- Topic 5 – Health promotion and improvement methods

Unit 3 – Understanding Personal Development and Relationships

- Topic 1 – Human growth and development
- Topic 2 – Factors that effect growth and development
- Topic 3 – Effects of relationships on personal development
- Topic 4 – Self concept
- Topic 5 – The effects of life events on personal development

Assessment

Units 1 & 2 are assessed through the completion of a coursework portfolio, and Unit 3 will be externally assessed in the form of a written exam. This course is a double award so you will be awarded two grades, e.g. BB.

Enrichment Programmes

A work placement will also be attached to this course and it is expected that this placement will reflect individual's areas of interest.

APPLIED GCSE IN LEISURE AND TOURISM

What is a GCSE in Leisure & Tourism?

A GCSE in Leisure & Tourism is a nationally recognised work-related qualification designed to provide you with a choice of routes into further education or employment. It is made up of three units.

What is a Double Award?

A double award is a qualification equal to two GCSEs - it is twice the size of most GCSEs.

What do I need to know or be able to do before taking the GCSE in Leisure & Tourism?

You do not need to have studied leisure and tourism before starting the GCSE. It is important that you have a lively and enquiring mind, an interest in the leisure and tourism industries, a willingness to explore new ideas and an ability to communicate your ideas effectively.

Why should I choose this course?

You will:

- gain an understanding of leisure and tourism and the part it plays in society
- investigate how the leisure and tourism industries meet the needs of their customers
- have an opportunity to apply learning in a practical and realistic way
- follow a programme of study that enables progression to further courses and employment in leisure or tourism
- develop Key Skills which are highly valued by employers and further education
- gain confidence by developing independent learning skills.

Who is the GCSE in Leisure & Tourism for?

This course will appeal to you if you:

- have a keen interest in leisure or tourism
- enjoy studying a subject that is relevant to your life and experiences
- want to find out more about leisure and tourism through personal investigation
- are interested in developing an understanding of how leisure and tourism influences our daily lives
- want to study a course that is active and enjoyable
- want to move on to a related career or further education in either leisure or tourism
- wish to build up a qualification by studying individual units

APPLIED GCSE IN LEISURE AND TOURISM (cont)

The structure of the GCSE in Leisure & Tourism

Unit 1: Investigating Leisure & Tourism

Unit 2: Marketing in Leisure & Tourism

Unit 3: Customer Service in Leisure & Tourism

How is it graded?

A GCSE in Leisure & Tourism is a double award, so it is awarded two grades. The grades will be the summary of your results for each of the three units. These will be reported as A*A* through to GG depending on how well you have done in each of your units.

What assessments will I do?

During the course you will carry out a number of assignments based on Units 2 and 3. In Unit 2 for example you may investigate a theme park, what sort of people use it and how the theme park advertises. Based on your findings, you could then produce an advert or a brochure. For Unit 3 you might act out the part of an airline check-in desk attendant dealing with a difficult customer and record your involvement. After completing your assignment your teacher will mark your work. During your course you will build up a folder (portfolio) containing your work for Units 2 and 3. This portfolio will count towards your final grade. As part of your course you will take a written test based on Unit 1. The mark for your test will also count towards your final grade.

Can I develop my full range of skills by doing this course?

As well as covering aspects of leisure and tourism, you will also develop your Key Skills in the areas of:

- Communication
- Application of Number
- Information Technology
- Problem solving
- Working with others
- Improving own learning and performance

If you take part in a discussion or role play, for example, you will develop your **Communication** Key Skill, as will reports that you write as part of your course. Collecting and analyzing information is part of the **Application of Number** Key Skill, and if you present this using IT, you are starting to develop your **Information Technology** Key Skill.

What courses or employment can I progress to at the end of my course?

Students gaining a GCSE in Leisure and Tourism will have access to a range of career and further education opportunities. You will use a variety of skills throughout the course, including collecting, analysing and interpreting data, communicating your findings in different ways, and identifying and developing the links between different parts of the subject. These skills are in great demand and are recognised and highly valued by employers and colleges. The options open to you depend on the results achieved and your own interests, your teacher will be able to help you decide on the next step.

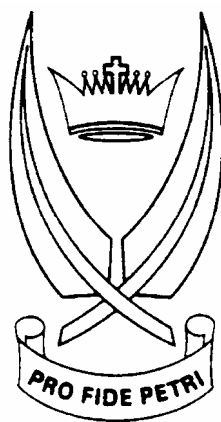
Further details contact Ms Barker

OTHER INFORMATION

UNIVERSITY DESTINATIONS FOR 2006

Name	Studying	At
Yolanda Appel	Psychology	Nottingham University
Yehudi Asamoah	Philosophy	Roehampton University
Dominique Azid	Intl. Politics/Strategic Studies	Aberystwyth University
Keleigh Batchelor	Media Studies	Winchester University
Adrian Bliss	Industrial Design	Brunel University
Cherelle Bovell	Early Childhood Studies and Sociology	Roehampton University
Sean Bowden	Quantity Surveying Consultancy	Kingston University
Anne Brown	English Language and Communication with Drama	Kingston University
Holly Burgess	Police Studies with Criminal Investigation	Buckinghamshire Chilterns University
Charlotte Cadman	Education and Employment with English	St. Mary's College
Kandice Callender	Accountancy and Law	De Monfort University
Daniel Carrigan	History	Kingston University
Adam Casey	Politics	Queens Belfast University
Imran Choudhury	Law and Sociology	Bristol University West of England
Debbie Chung	Financial Computing	Brunel University
Hayley Cook	Psychology	Kingston University
Jennifer Crehan	Art Foundation	West Herts University
Julie-Anne Cullinane	Biomedical Sciences	Cardiff University
Carly Dennis	Media and Cultural Studies	Nottingham Trent University
Kishan Dhayatker	Geography	UWE Bristol
Helen Durkin	English with Sociology	St. Mary's College
Marion Durkin	Media Arts with Cultural Studies	St. Mary's College
Hannah Egan	Sports Education	Gloucester University
Melanie Lyn Encarnacion	Management	Leicester University
Jonathan Enebi	Media Production	De Montford University
Marie Faulkener	Sociology	Southampton University
Daniel Fry	Physics	Leeds University
Nicola Giudice	Business Studies	Hertfordshire University
Kieron Gradwell	Social Sciences	Cincinnati, USA
Dale Haynes	Aeronautics and Astronautics	Southampton University
James Healey	Business Management with Marketing	Buckinghamshire Chilterns University BCUC
Steven Hedges	Motorsport Engineering	University of West England, Bristol
Christopher Houghton	Business Information Technology	Kingston University
Jamie Jamieson	Commercial Music Performance	Westminster University
Zoe Jones	Film Studies and English	Bristol University West of England
Andrew Kyriacou	Chemistry	University London Imperial College
April Landers	Police Studies	Buckinghamshire Chilterns University (BCUC)

Olivia Louisy	History	Southampton University
Antonella Matia	Sociology	Brunel University
Kiel McGovern	Computer Games	East London University
Claire McInerney	English Literature with Sociology	Kingston University
Sean McPherson	Human Muscoskeletal Science	Bristol University
Sarah Mohan	Sociology	Brunel University
Daragh Mohsen-Agha	Financial Mathematics	Brunel University
Kylie Moran	English Literature with Sociology	Kingston University
Thandiwe Moyo	Law	Keele University
Casandra Murray	Ancient History and Archaeology	Reading University
Sarah-Grace Nicholson	Politics	Surrey University
Lisa Nolan	Medicine	St. Georges University of London
James Northall	Physics	Nottingham University
Mairi Stella O’Gorman	Anthropology	Aberdeen University
Jonathan O’Hara	Product Design	Buckinghamshire Chilterns University (BCUC)
Leanne O’Shea	Media Arts with Film and Television	St. Mary’s College
Laura Ovard	Occupational Therapy	South Bank University
Christian Pabalate	Media Technology	Kingston University
Colleen Perry	Media Arts with Drama and Performance Studies	University of Arts London
Gautaman Raveendhran	Mathematics	Nottingham University
Lauren Roche	Criminology and Sociology	Liverpool John Moores University
Benita Sabharwal	Psychology	Reading University
Mohinder Sahota	Law	Hertfordshire University
Shane Saunders	Computer Studies	Uxbridge College University
Daniel Simpson	English	St. Mary’s College
Helen Sinclair	Biochemistry	University of London Imperial College
Danielle Solis	Fashion Management	University of Arts London
Caeshia St Paul	Marketing	Aston University
Claudia Tabony	Sports Science	St. Mary’s College
Amanda Thone	Business and Management	Brunel University
Carina Turetta	Law	Reading University
Anthony Warnakulasuriya	Foundations Extended Engineering	Staffordshire University Regional Federation
Joanne Webb	Psychology	Hertfordshire University
Mark Wesoly	History	University of London, Royal Holloway
Gary Wickens	Sociology	Buckinghamshire Chilterns University (BCUC)
Charlotte Williams	Media and Cultural Studies with Sociology	Kingston University
Verity Worthington	Psychology	Buckinghamshire Chilterns (BCUC)
Charlotte Yendell	Business and Sociology	Kingston University
Darren de Motte	Physics with Astrophysics	Sussex University



THE DOUAY MARTYRS SCHOOL
Edinburgh Drive, Ickenham, Middlesex. UB10 8QY

Tel: 01895 679400 Fax: 01895 679401
douaymartyrs@hillingdongrid.org
www.douaymartyrs.hillingdon.sch.uk



The Certificate in Business Language Competence

- The CBLC offers a variety of languages including ;
French, German, Spanish and Russian
- It was developed to meet the demands of business and offers career opportunities as an employee in hotels, travel industry, airport, engineering, sales and marketing
- It offers 5 levels of Award;
Entry level – pre GCSE
Level 1 – GCSE G-D
Level 2 – GCSE C-A*
Level 3 – AS/A2
Level 4 – First Year University. Equivalent to NVQ levels 1 – 4.
- Each level represents skills, vocabulary and knowledge required within a business context, such as, Dealing with visitors
Booking a hotel
Directions and signs
Travelling on business

In the format of telephone conversations, reports, emails and faxes.

- The skills covered are Listening, Speaking, Reading and Writing.
- Grammar is not as formally taught, dependent on Level, but accuracy in Writing and fluency in Speaking is vital in order to communicate/convey the message.
- Each level is divided into a number of elements which are examined continuously and within 4 weeks notice by an external examiner.
- Assessment is based on role plays and written tests, depending on the level.
- Each level when passed achieves a separate certificate. Level 2 and above will gain student UCAS points. The CBLC can form part of a GNVQ portfolio.
- The learning hours required for Levels 1 and 2 are equivalent to the present GCSE and Level 3 to A Level.
- The existing members of the Languages dept will teach the course with the additional help of the Language Assistants.
- We intend to run the CBLC starting September 2007 subject to uptake.